



# BLUZA FEMEI

BLUZA ESTE UN PRODUS DE IMBRACAMINTE  
CU SPRIJIN PE UMERI  
CARE SE UTILIZEAZA IN TOATE ANOTIMPURILE  
SI PENTRU DIFERITE OCAZII

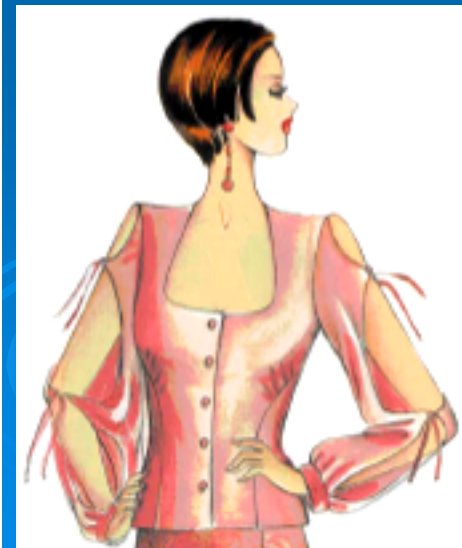
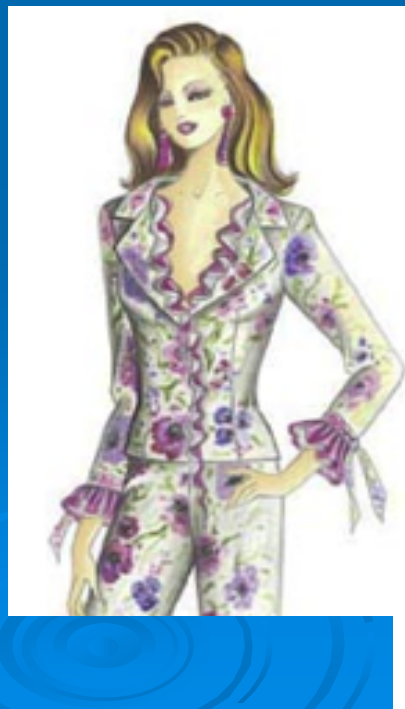
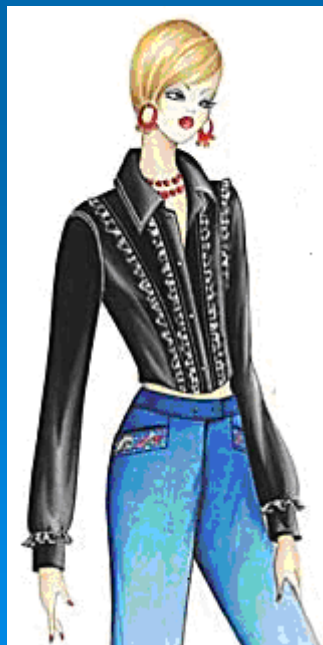
Bluzele se poarta in combinatie cu pantalonii sau cu fustele.



Se confectioneaza din tesaturi subtiri din fire naturale (bumbac, matase, lana) , fire chimice sau in amestec, in diferite desene, culori si imprimeuri.



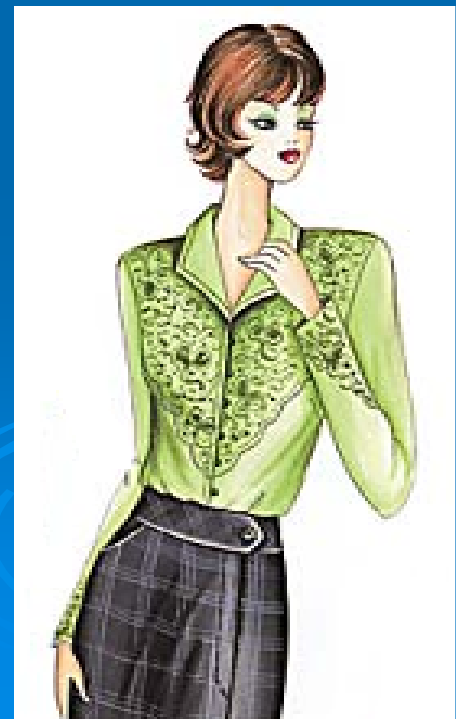
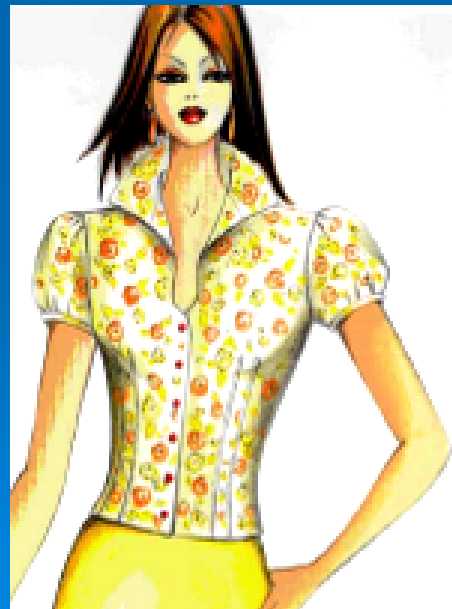
In functie de complexitatea modelului, bluzele pot fi prevazute cu elemente decorative ca : volanase, cerculete, tighele, broderii, aplicatii de diverse forme.



## BLUZELE POT FI :

### DUPA FORMA MANECII

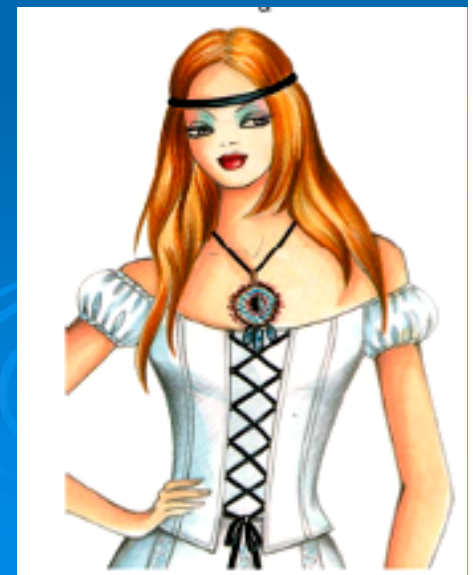
- Fara maneca
- Cu maneca scurta
- Cu maneca trei sferturi
- Cu maneca lunga





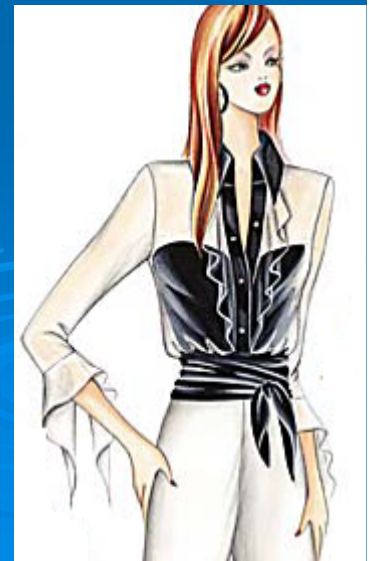
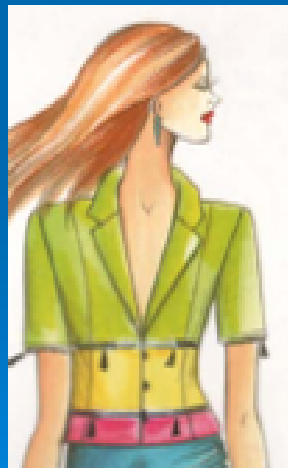
## DUPA MODUL DE PRINDERE A MANECII

- Cu maneca clasica
- Cu maneca raglan
- Cu maneca chimono
- Cu maneca gen ie



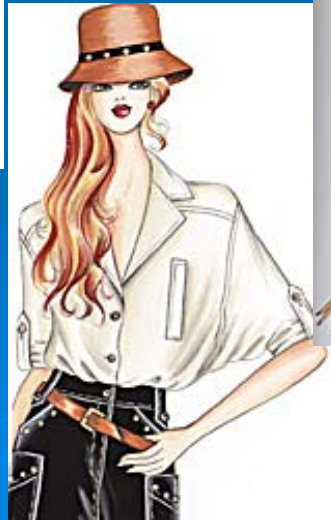
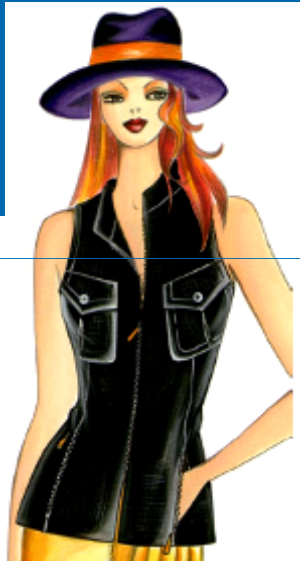
## DUPA FORMA DE RACORDARE LA GAT

- Fara guler
- Cu guler: rotunjit sau cu colturi
- Cu rever
- Cu guler sal
- Cu funda
- Cu jabou ( element decorativ confectionat din dantela sau alt material fin care se fixeaza pe piept ca o cravata)



# ALTE DETALII :

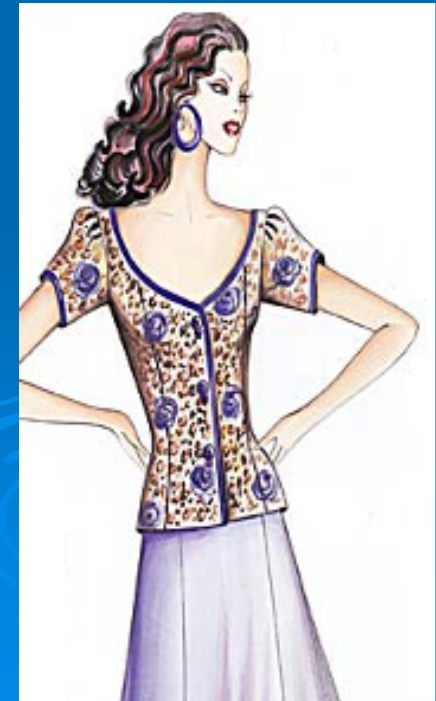
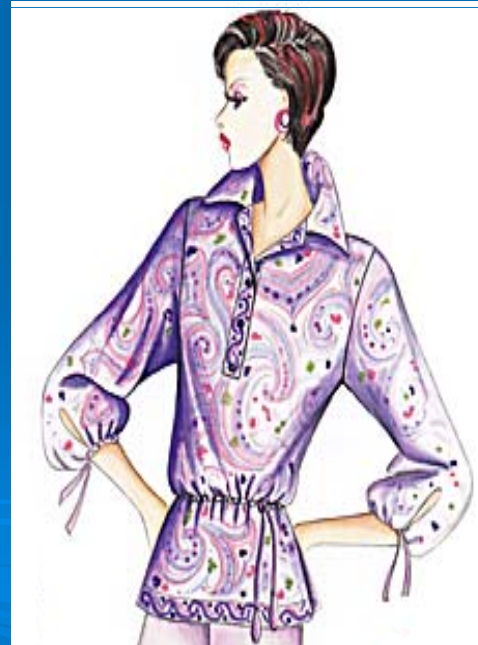
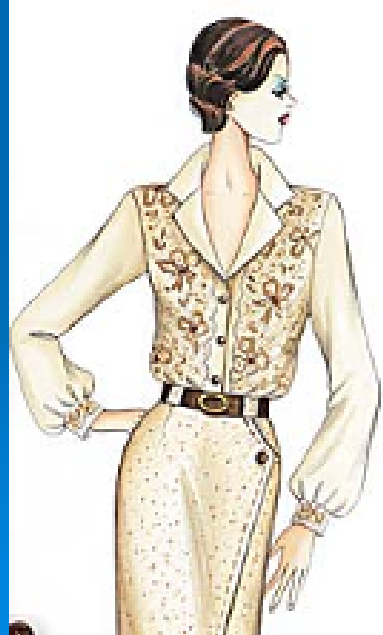
- Cu buzunare
- Cu mansete simple sau duble





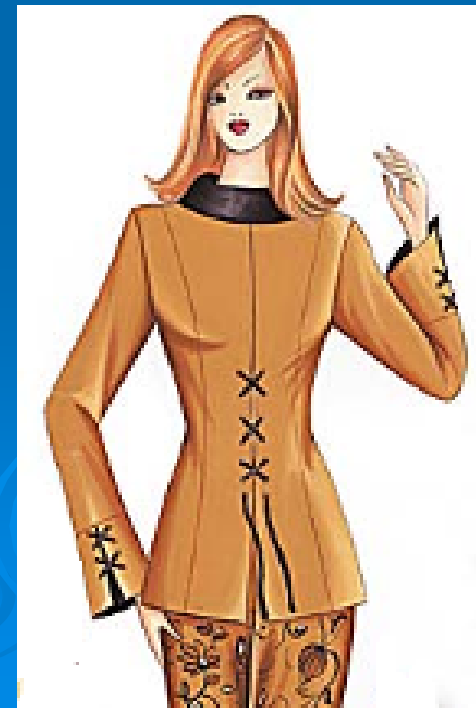
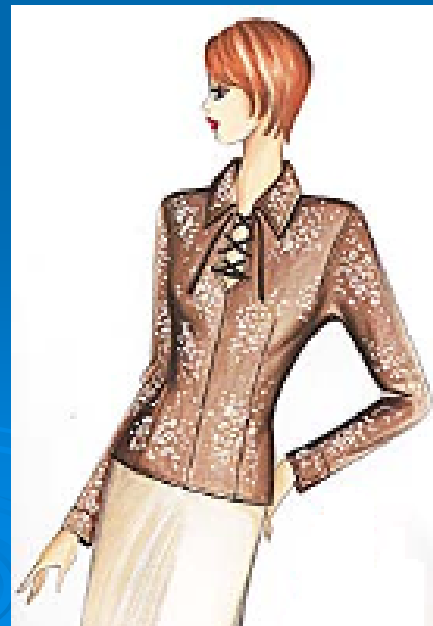
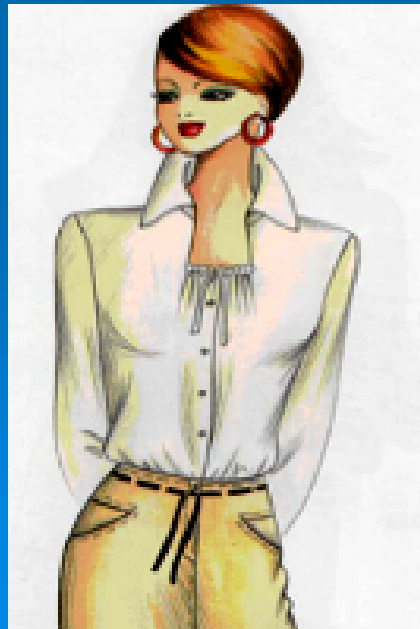
# DUPA FORMA CROIELII :

- Largi
- Drepte
- Stranse pe corp



## DUPA MODUL DE INCHIDERE

- Inchisa in fata cu nasturi sau capse
- Inchisa in fata cu snur
- Inchisa in spate



VA MULTUMESC  
PENTRU ATENTIE !

PROF. ING. MURESAN A.  
COLEGIUL TEHNIC  
“ ELISA ZAMFIRESCU ”  
SATU MARE

